



Shaun XIONG

Neuropathic Pain

Neuropathic Versus Neurogenic



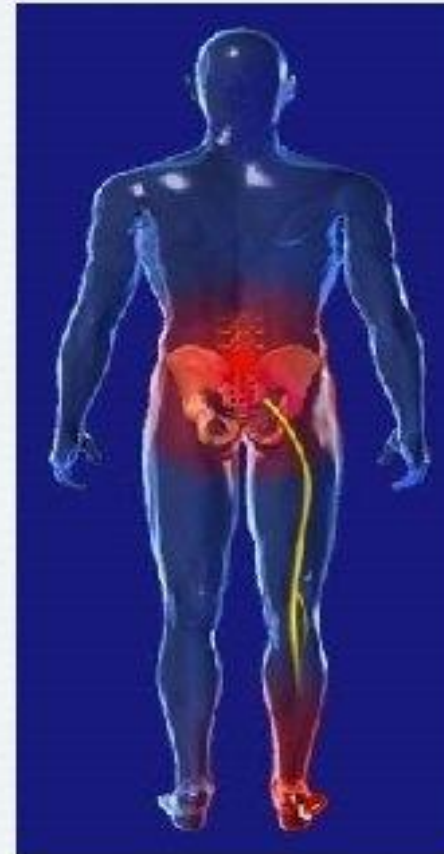
Neuropathic Pain Has a Wide Variety of Etiologies



Shingles



Diabetic neuropathy



Radiculopathy



Nerve trauma



Surgery



Introduction

Neuropathic pain is defined as proposed by the International Association for the Study of Pain (IASP) as “pain initiated or caused by a primary lesion or dysfunction of the nervous system” [25]. Neuropathic pain is divided into peripheral and central pain [25–27]. Pain after SCI is classified according to type, localization and level of injury [8]





Neuropathic Pain Due to SCIs

1. Radicular, root pathologies
2. Segmental, transitional zone
3. Central Neuropathic Pain/ Syringomyelia
4. Complex Regional Pain Syndrome
5. Visceral/ Autonomic nerve mediated





Thank you



Shaun XIONG

xiongxl@xtra.co.nz

Xianghu.Xiong@cdhb.h

ealth.nz